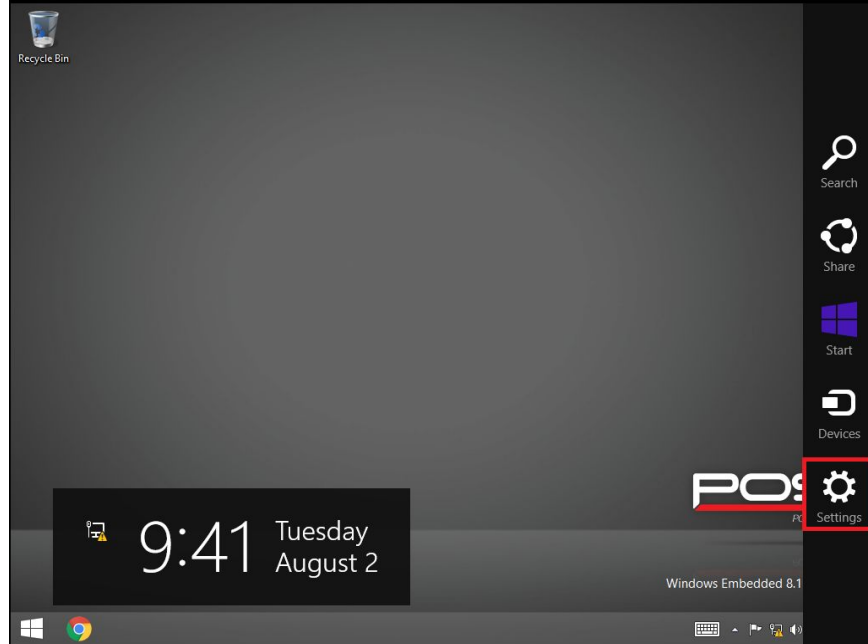


POS-X Factory Restore Utility

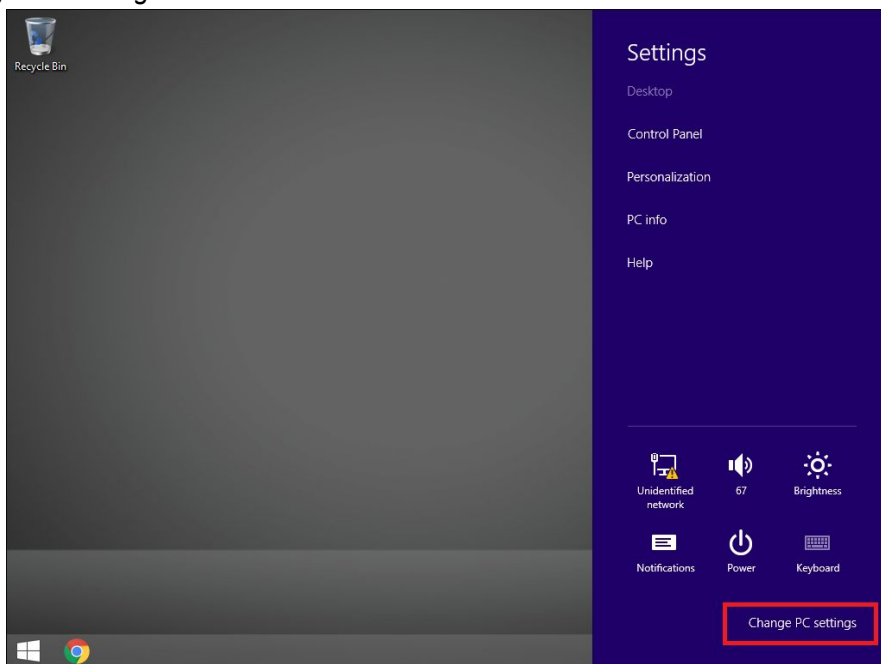
Windows 8.1 Instructions

Accessing the Recovery Partition:

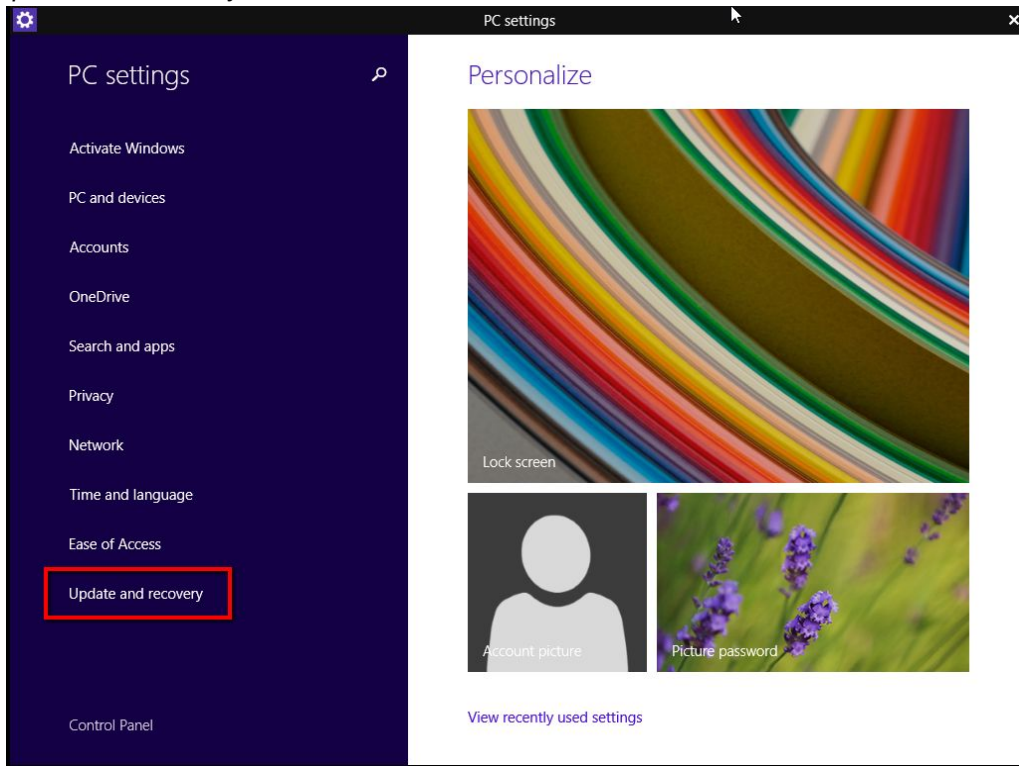
1. Swipe on the right of the screen to open the *Charm Bar* and click on *Settings*.



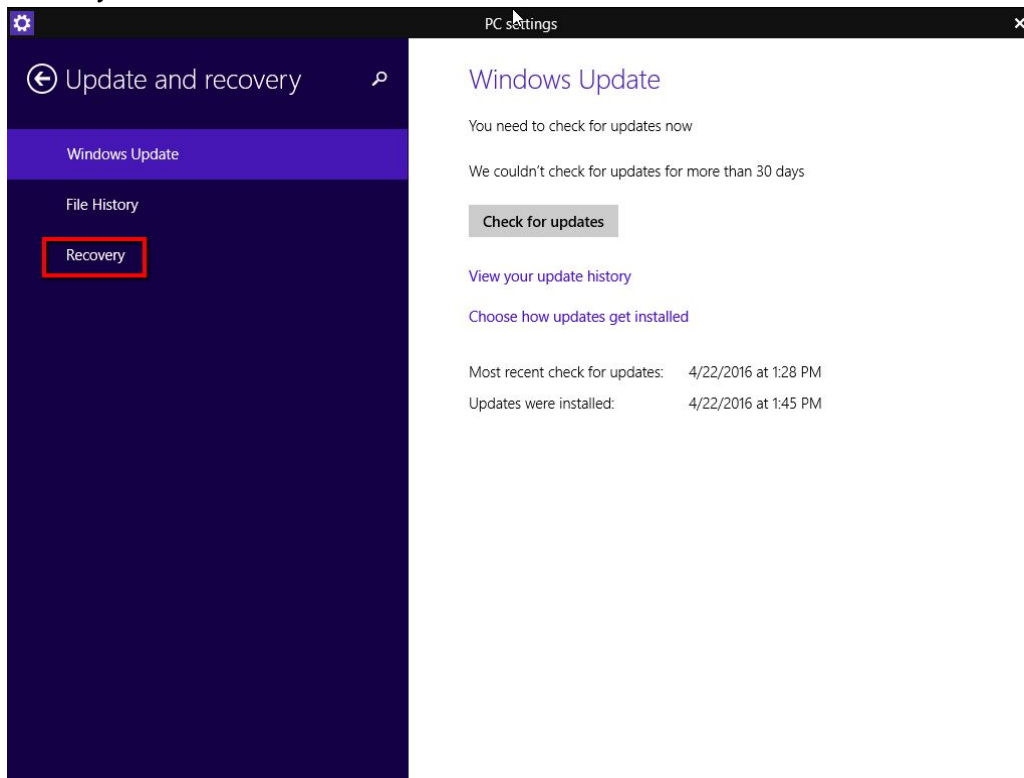
2. Click on *Change PC settings*.



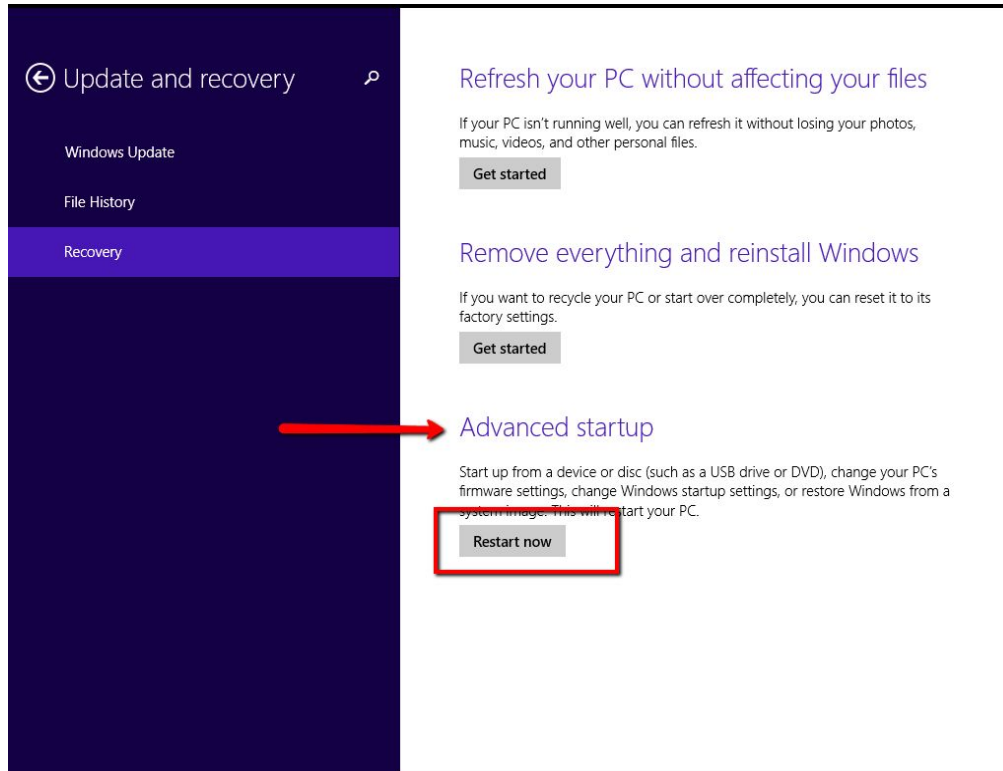
3. Click on *Update and recovery*.



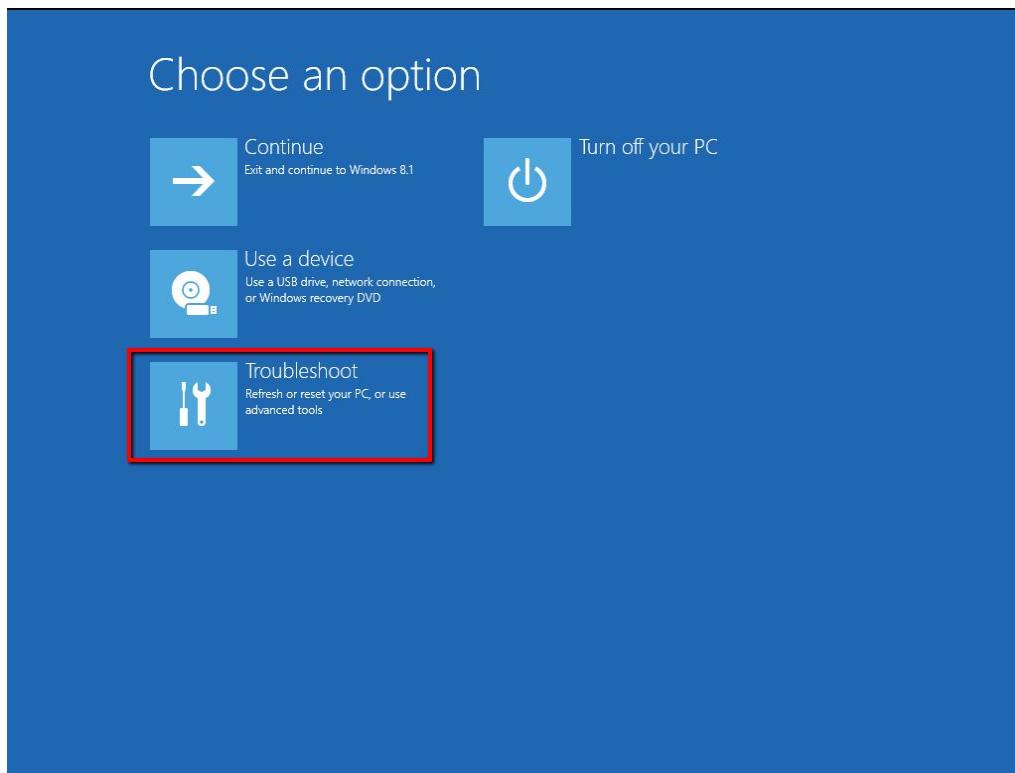
4. Click on *Recovery*.



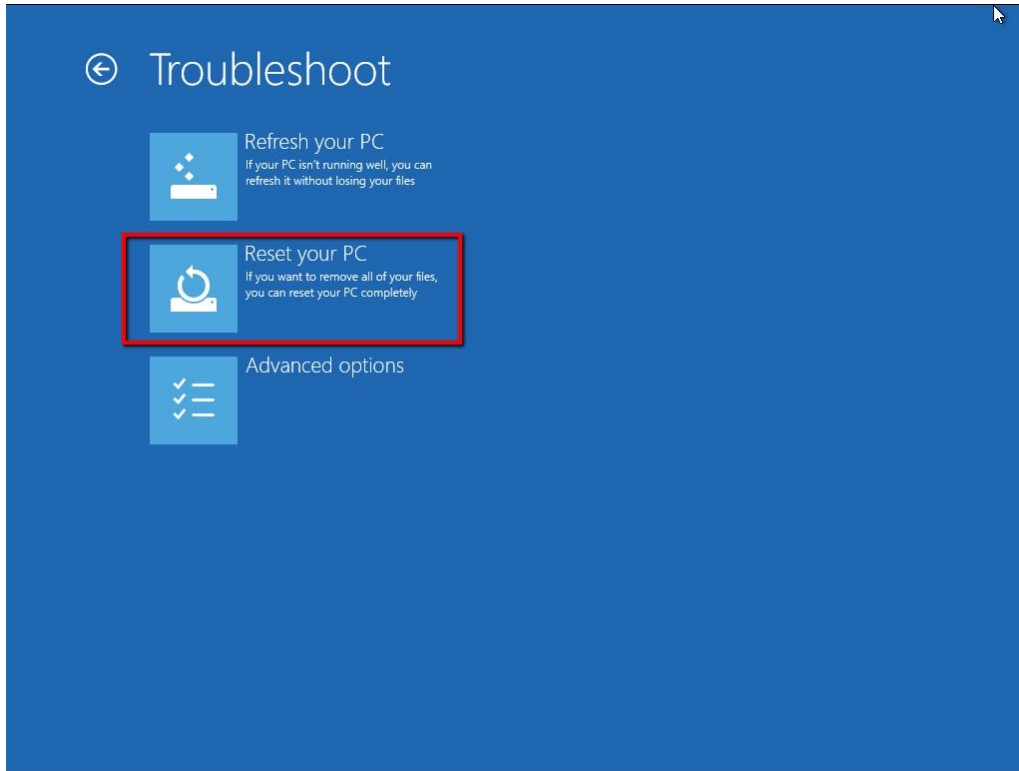
5. Click on *Restart now* under the *Advanced startup* section.



6. Click on *Troubleshoot*.



7. Click on *Reset your PC*.



8. The computer will now restart and boot to the recovery partition. It will appear as though it is booting to Windows.

Running the Restore Utility

9. Click on *Factory Restore*.



10. Please take note of the disclaimer:

This utility will restore the entire C: drive to the initial factory fresh state.



Caution: All current data on C: drive will be removed and the data will be restored to a factory fresh state. Once performed, the current data on your disk cannot be recovered.

11. If you wish to wipe the entire drive, press *Proceed*.



12. Any existing data on drive C: will be lost once the Factory Restore process begins. Please acknowledge that you understand this by select the image of the cat.



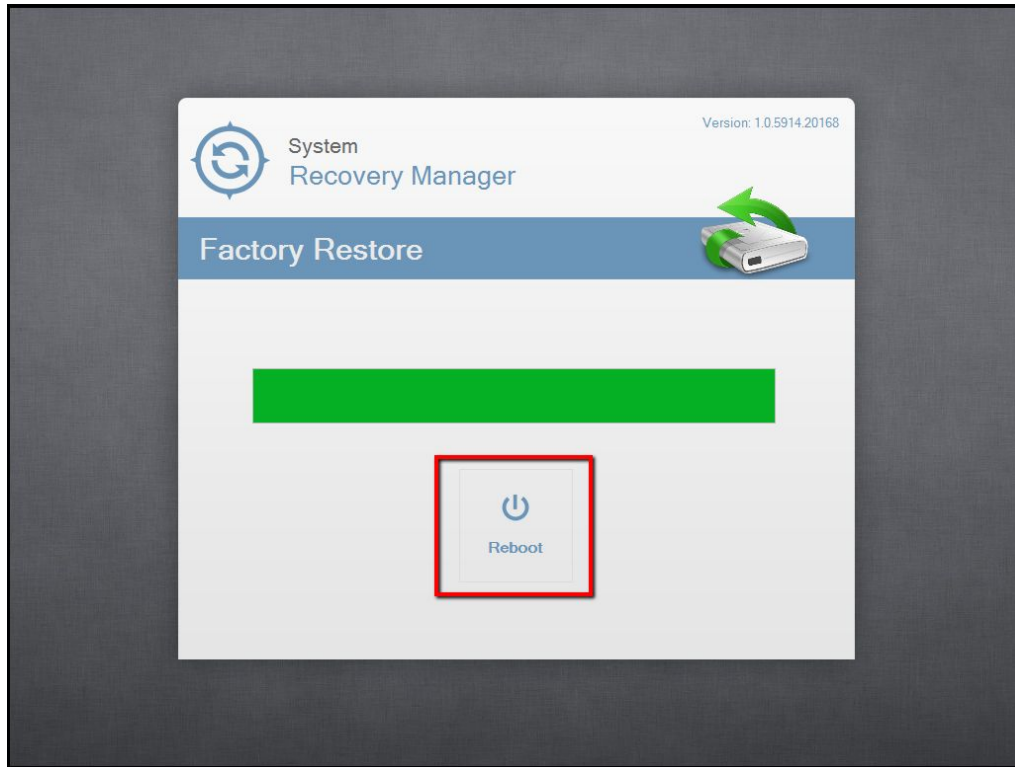
13. Click on *Restore*.



14. The drive will now be restored to a factory fresh state. This process takes roughly 10 minutes.



15. When the Factory Restore is complete, click on *Reboot*.



16. The computer will now restart and boot into Windows.

If windows will not boot, follow the steps below:

1. Tap *Delete* when powered on to enter BIOS.
2. Select *Boot Manager*.
3. Select *Windows Boot Manager*
 - a. The terminal will now boot to the recovery partition.