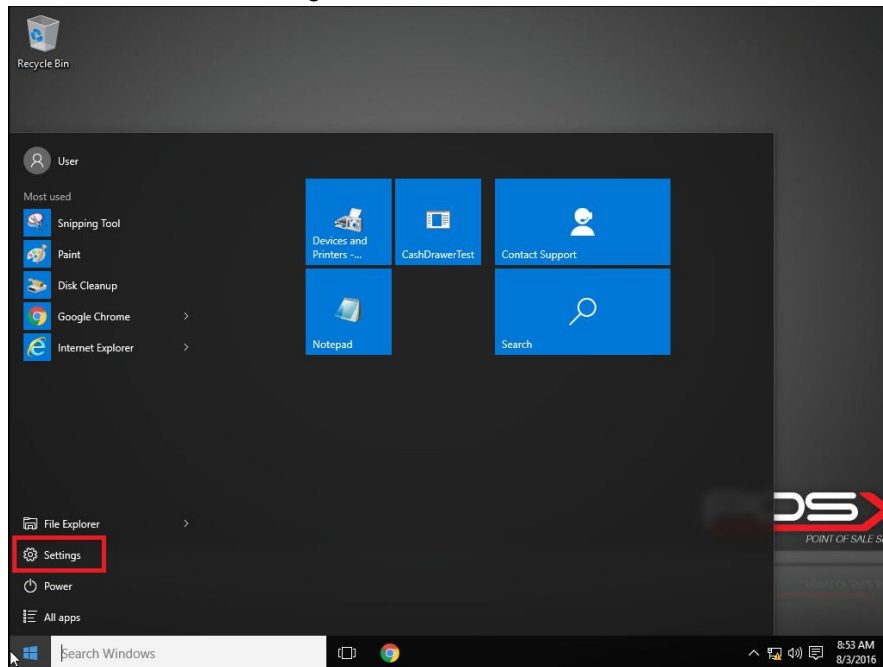


POS-X Factory Restore Utility

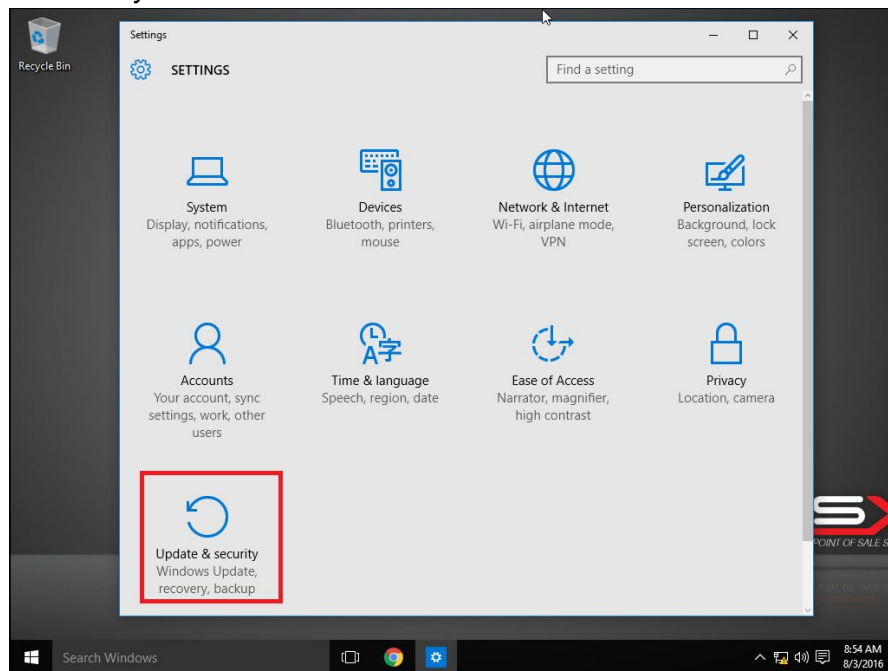
Windows 10 Instructions

Accessing the Recovery Partition:

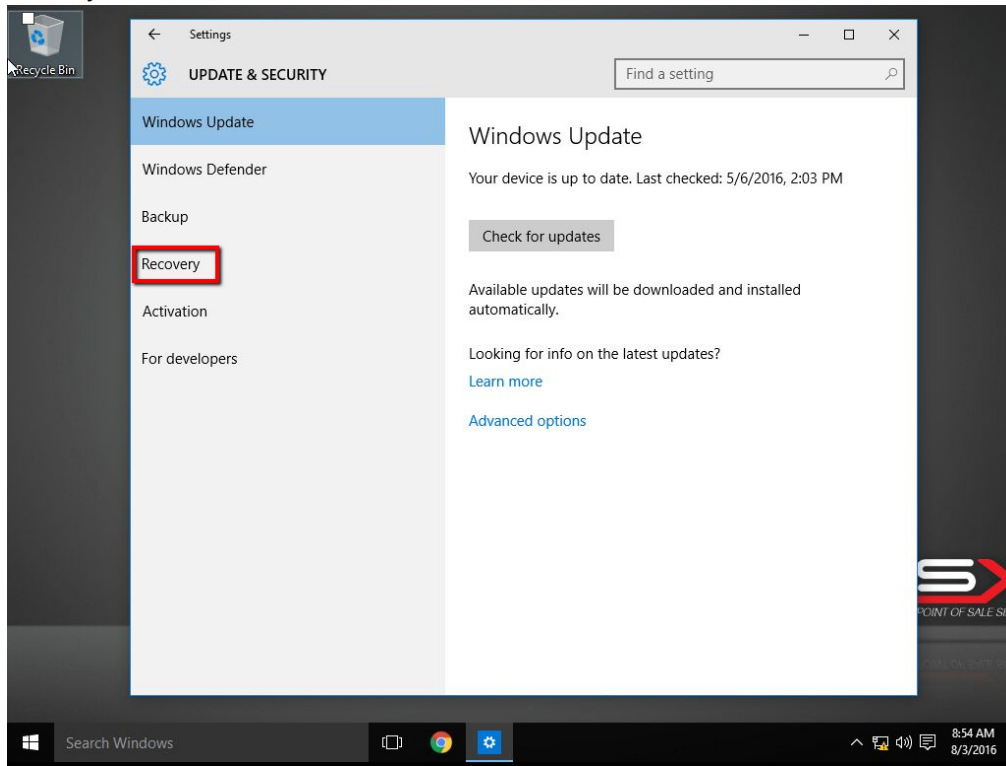
1. Click on the *Start* button and select *Settings*.



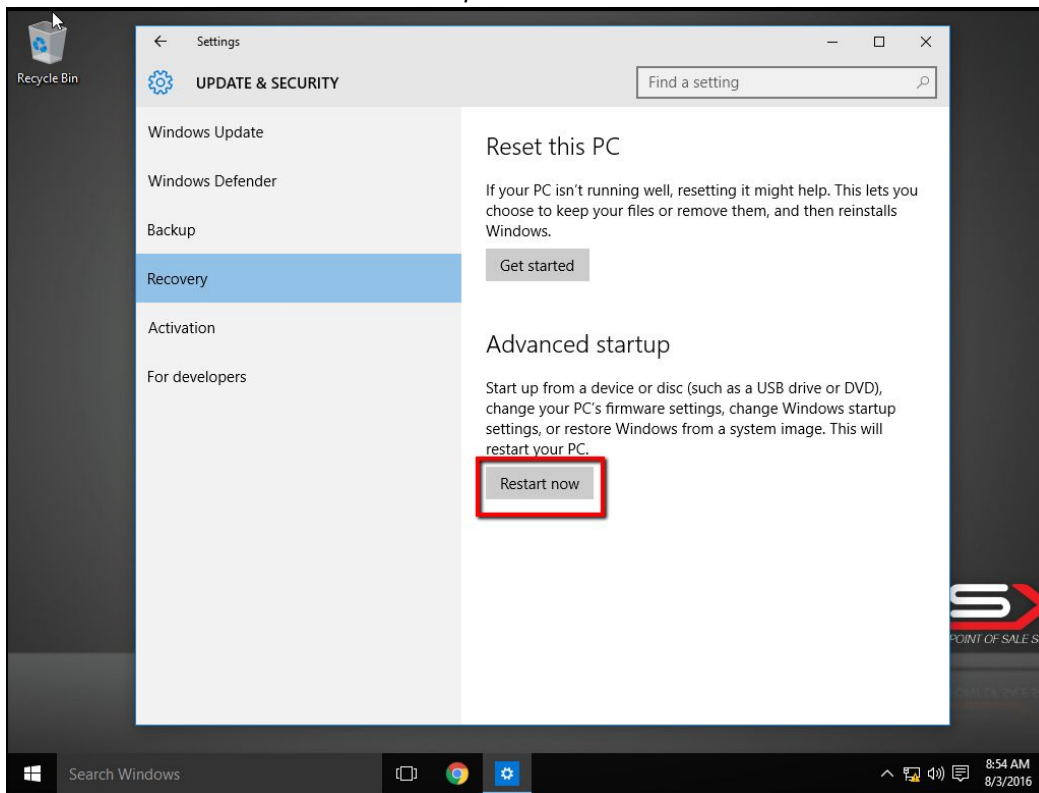
2. Click on *Update & Security*.



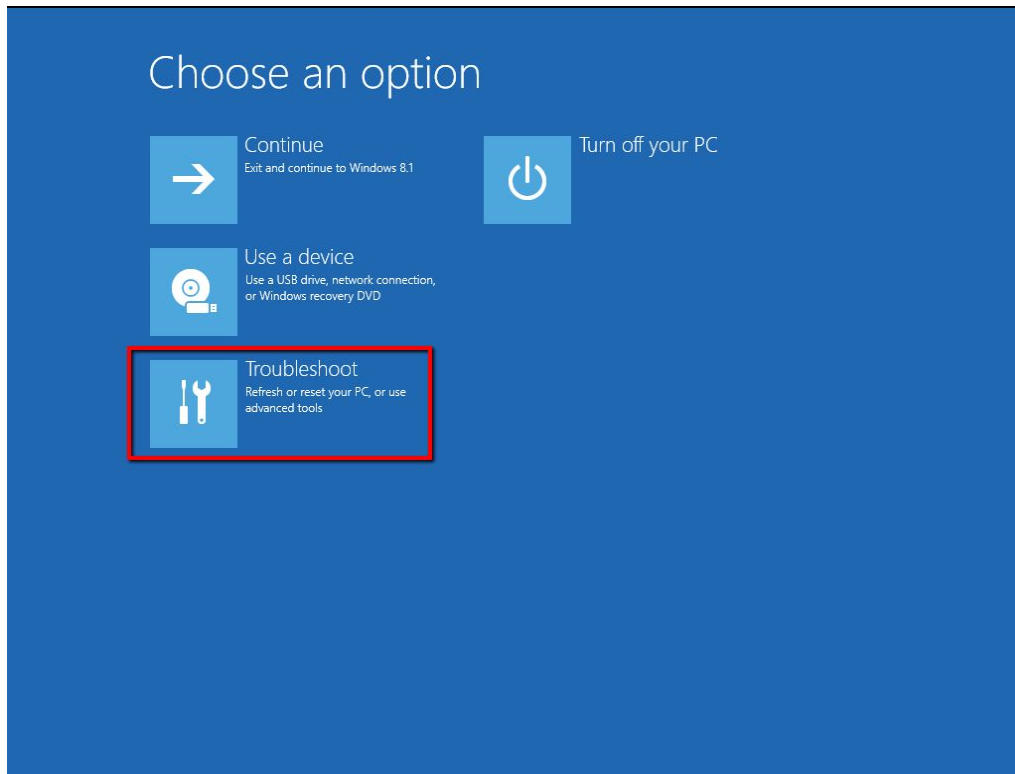
3. Click on *Recovery*.



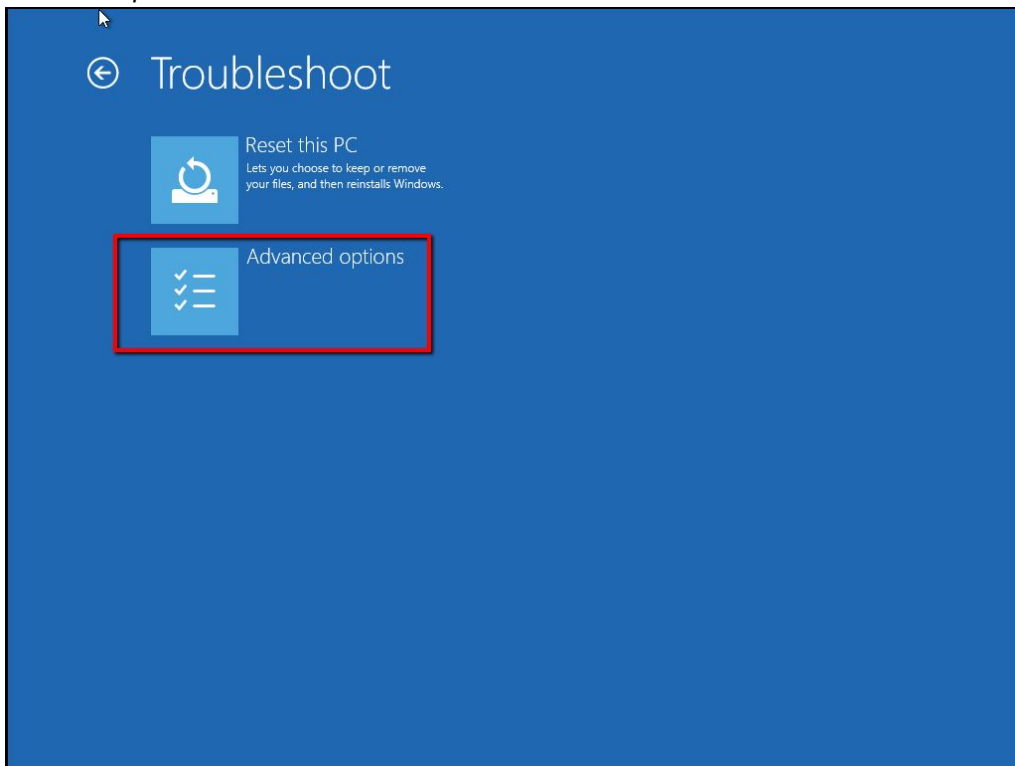
4. Click on *Restart now* under the *Advanced startup* section.



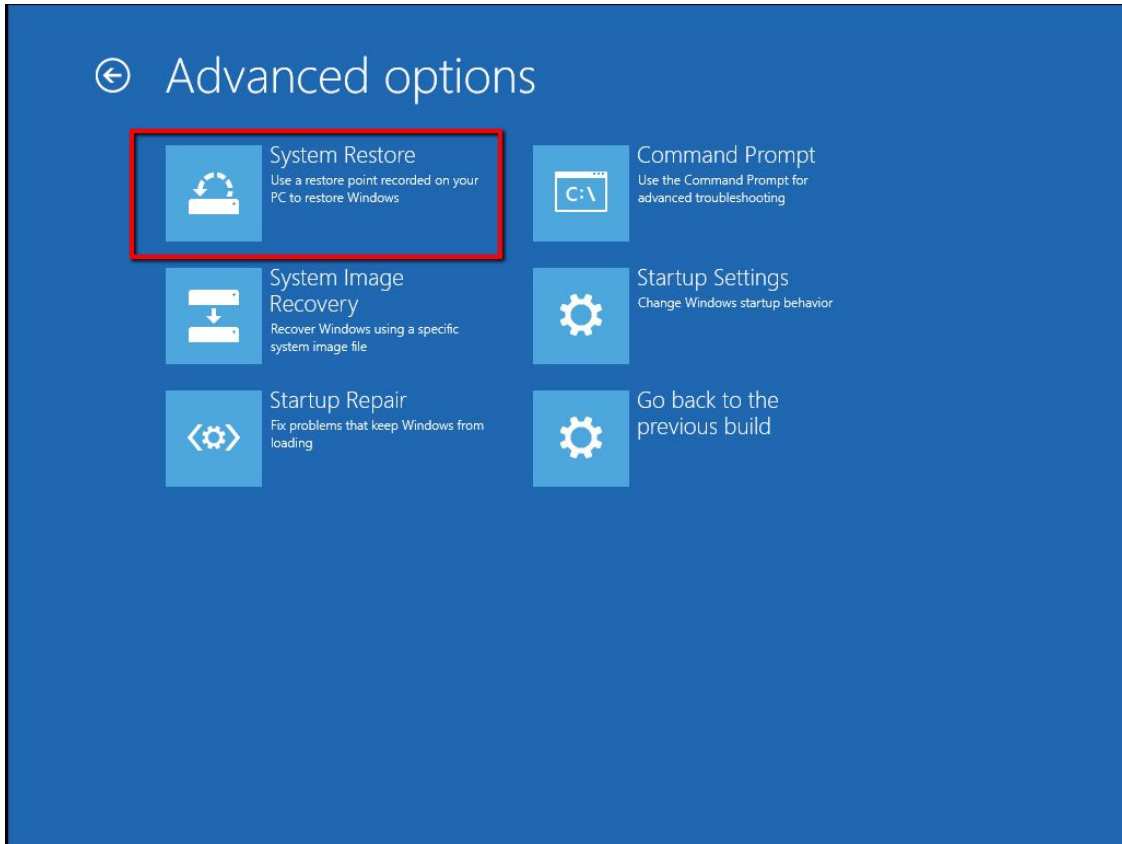
5. Click on Troubleshoot.



6. Click on *Advanced options*.



7. Click on *System Restore*.



8. The computer will now restart and boot to the recovery partition. It will appear as though it is booting to Windows.

Running the Restore Utility

9. Click on Factory Restore.



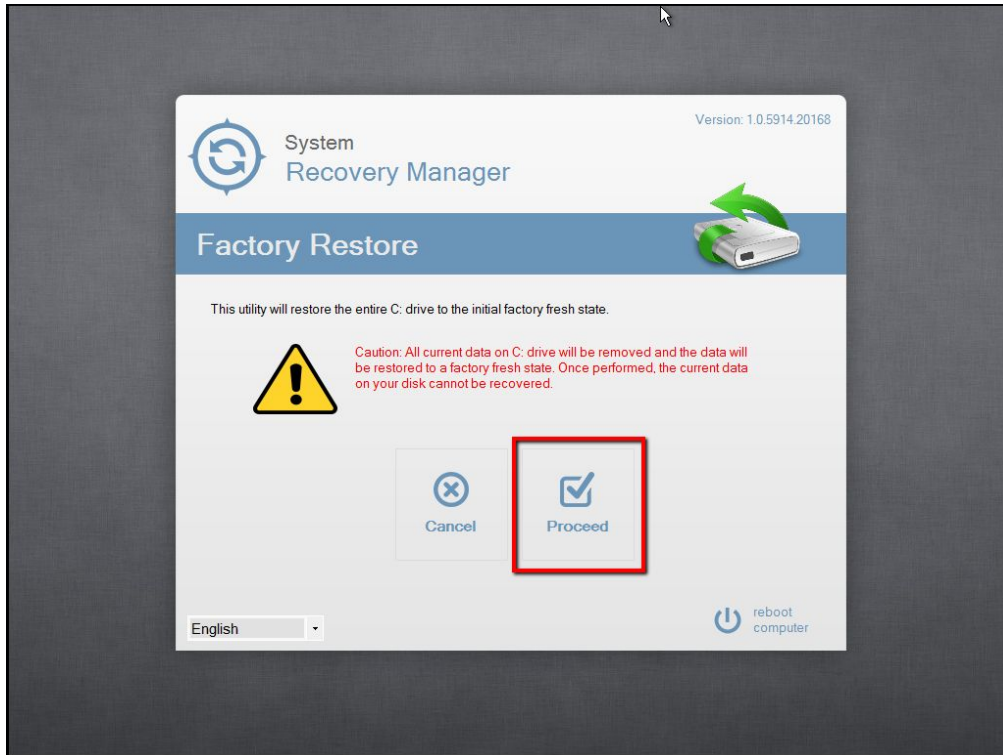
10. Please take note of the disclaimer:

This utility will restore the entire C: drive to the initial factory fresh state.



Caution: All current data on C: drive will be removed and the data will be restored to a factory fresh state. Once performed, the current data on your disk cannot be recovered.

11. If you wish to wipe the entire drive, press Proceed.



12. Any existing data on drive C: will be lost once the Factory Restore process begins. Please acknowledge that you understand this by select the image of the cat.



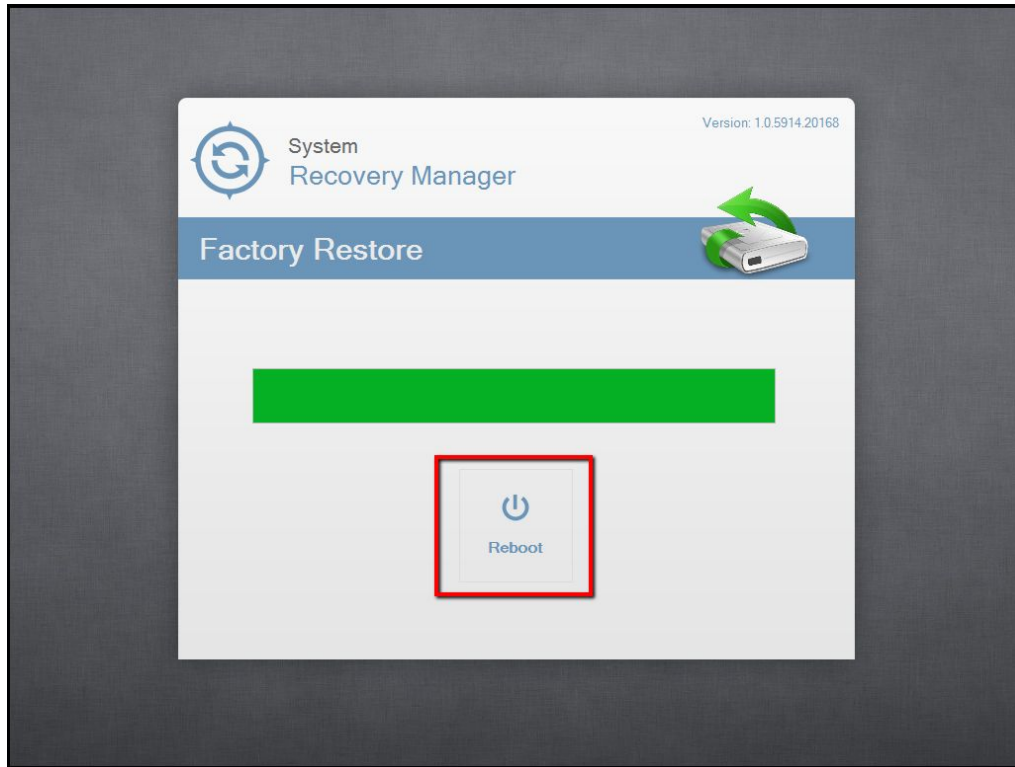
13. Click on Restore.



14. The drive will now be restored to a factory fresh state. This process takes roughly 10 minutes.



15. When the Factory Restore is complete, click on Reboot.



16. The computer will now restart and boot into Windows.

If windows will not boot, follow the steps below:

1. Tap *Delete* when powered on to enter BIOS.
2. Select *Boot Manager*.
3. Select *Windows Boot Manager*
 - a. The terminal will now boot to the recovery partition.